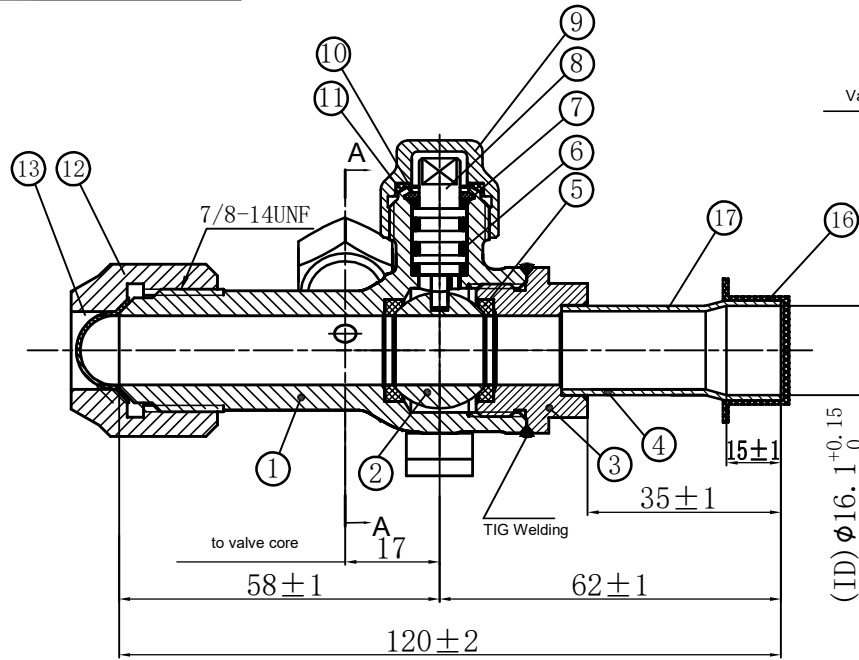
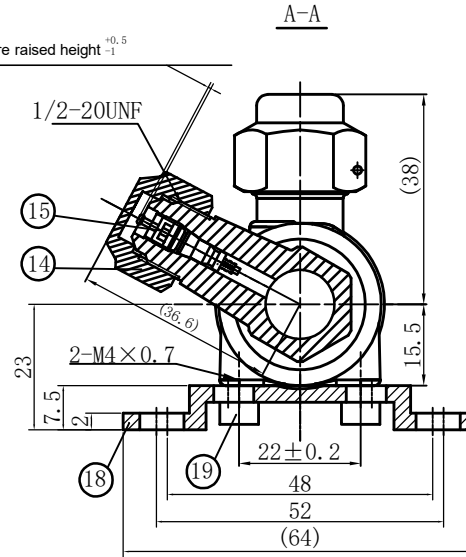


QF12-4001

REFRIGERANT: R410A



Valve core raised height <sup>+0.5</sup>/<sub>-1</sub>

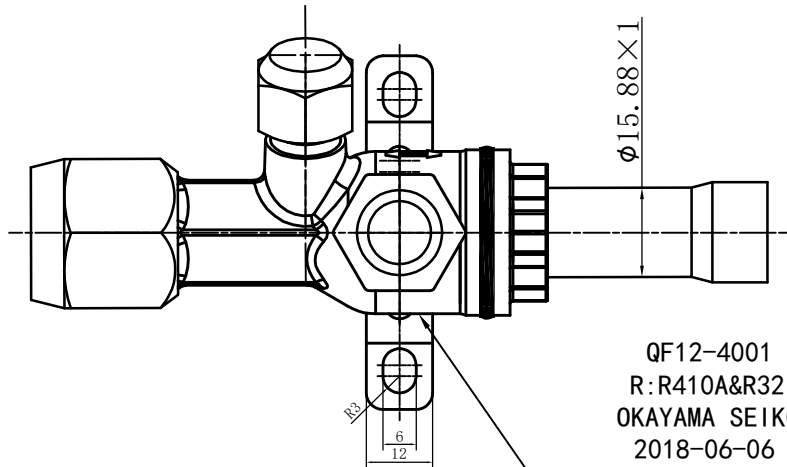


**SPECIFICATION AND NOTE**

- NO
- 1/ DIA 12mm
  - 2/ No Body Leakage at 4.15MPa when valve open & close
  - No Inner Leakage when valve closed at 0.35MPa
  - 3/ Design Pressure 4.15MPa
  - 4/ Hyrdo Testing Pressure 6.23MP
  - 5/ Busting Pressure 20.8MPa
  - 6/ Media Temp -30°~+120°
  - 7/ Ambient Temp -30°~+60° @ below 95%RH
  - 8/ Valve Stem Torque ≤6N.m
  - 9/ No Dust, Dirts, Chips
  - 10/ Absolute Open/Close during operation

**Factory Setting**

- 1/ Fully opened when delivery
- 2/ Valve Stem Nut: Tighten by hand tight
- 3/ Valve Core tighten at 0.35~0.45N.m
- 4/ O-Ring mfg by :NOK or Ruifu
- Grease by: Moly Kote EM-50L
- 5/ Valve Core mfg by GZL



QF12-4001  
R:R410A&R32  
OKAYAMA SEIKO  
2018-06-06

Lazer Marking Letter:  
Area 11mm×20mm  
Font: Arial Height:2mm

8	3124201-10	Stem	1	SUS304		19	GB70-85	Bolt M4*8	2	SUS304	附件
7	3125201-10	Seat	2	PTFE		18	3128101-10	Mounting	1	SUS304	附件
6	G859	O-Ring	2	HNBR	P7	17	3127101-10	Cu Tube	1	TP2M	
5	3205101-10	Ball Seat	2	PTFE		16	260502-10	Cap	1	PE	
4	3207005-10	Tail Peice	1	Brass+Cu		15		Valve Core	1	for R410A	GZL
3	3202103-10A	Tail	1	C3602	H26	14	103304-10A	Core Nut	1	GHP659-1/C377	S17
2	3203102-10	Ball	1	SUS304		13	44110-054-40	Cap	1	T2M	
1	3201103-10A	Body	1	C3602		12	TLM-D04-H	Flare Nut	1	GHP659-1/C377	S27
No	Code	Name	Qty	Material	Note	11	3005201-10	Seat	1	PTFE	
						10	3128101-10	Stop Ring	1	C3771	
						9	009G7343-01A	Nut	1	C3771	S21

DN 12

OKAYAMA SEIKO

17F06815

原底图号 C0034194Gr